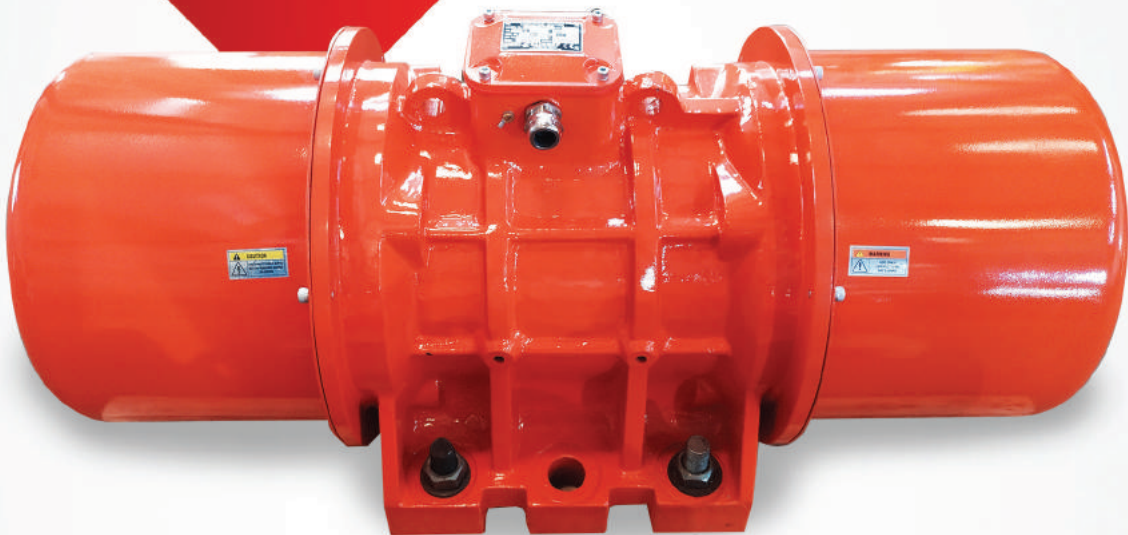


VIBRATORY MOTORS



SAIDEEP
VIBRATORS PVT LTD



Unbalance Motors Generate a Rotary Centrifugal Force due to Unbalance Weights fixed on either side of Motor. This centrifugal force sets the whole mass vibrating. The Frequency of vibration depends on the mass being vibrated.

Features

- Robust Design : Motor Frames Casted in SG Iron or Aluminium.
- Mechanical Protection Structure : Can Operate under harsh, dusty environments. Complies to IP 66 specification according to IEC 60529.
- H-Class Insulated Winding : Can Withstand Temperature upto 220° C.
- Adjustable Vibration Forces : From Zero to Maximum by adjusting the position of Unbalance Weights provided on both sides of the Motor Shaft.
- Wide Range : From 2 to 8 Pole with various Standard Models.
- Silent Operation : The Vibro Motors make no unpleasant sound.
- Service Rating : Continuous Duty (S1) at maximum Centrifugal force & S4 Duty available on request.
- Centrifugal Forces : The Vibro Motors are available in a wide range of Centrifugal Forces ranging from 200 N to 130000 N.
- Operating Environments & Temperatures : For Indoor & Outdoor Use : Temperatures -20°C to +80°C.
- Tropicalizing : Class H Insulated Windings (220°C) ; Motor winding is Vacuum impregnated ; PTC Thermistor incorporated in all SG Iron Frames.
- Terminal Box : Terminal Box Connector sealed with a layer of resin to prevent damage due to Vibrations.
- Power Supply : 400 V (± 10%) 50/60 Hz 3 Φ AC. Special Voltages/Frequencies can be provided on request on additional cost.
- Bearings : All bearings used are of NSK Japan/SKF.
- Colour Coating : Polyurethane Painting Supported by (Hempe/Grand Polycoat) OR Polyester Powder Coating. (Special RAL Shades can be provided on request at no extra charge).
- Standards Supported : Conformity with European Directive ; Low Voltage 2014/35/UE ; Machine Directive 2006/42/EC.



Application

- Silos
- Hoppers
- Vibrating Feeders
- Screens
- Piping
- Threshers
- Dump Trucks



Industries

- Food
- Animal Feed
- Fertilizers
- Agriculture
- Pharmaceuticals
- Chemicals
- Plastics
- Cement
- Glass
- Air Treatment
- Automotive
- Mining



Benefits

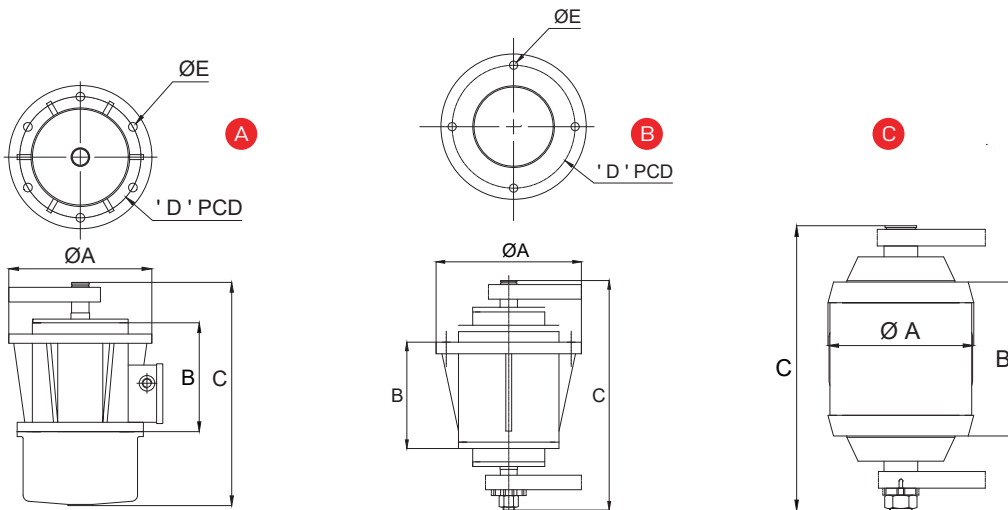
- Safe
- Economic
- Robust
- Reliable
- Easy to Install
- High Performance
- Global Availability
- Increased Productivity

Precaution

- I. Vibrators should be installed on flat surface, else local forces may develop causing breakage of legs or flanges.
- II. Vibrating force on both ends of the Motor shaft should be adjusted equally otherwise the operation will be erratic.
- III. Although the bearings are prelubricated. Please pay special attention to lubrications as per the instruction manual.



FLANGE & WEDGE MOUNTING



Flange Mounting (Enclosure : IP-66)

Technical chart of vibrating motor

Model	Ref	RPM	Centrif. Force		Power		Current		A	B	C	D	E	Weight
	Fig		N	kW	A max.	kgs.(50 Hz)								
SM 30	A	1440	4000	0.38 kW	1	230	175	360	195	14	25			

Flange Mounting (Enclosure : IP-55)

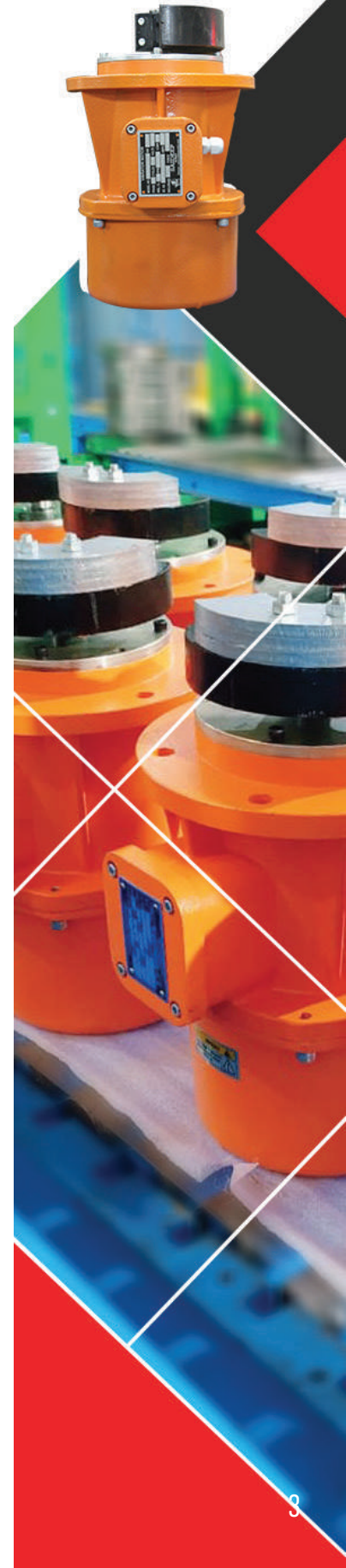
Technical chart of vibrating motor

Model	Ref	RPM	Centrif. Force		Power		Current		A	B	C	D	E	Weight
	Fig		N	kW	A max.	kgs.(50 Hz)								
SM 1	B	3000	1200	910	0.13	0.14	0.6	0.5	150	140	305	130	14	19.7
SM 2		1440	2000	3030	0.23	0.25	0.7	0.6	195	135	325	165	14	20.4
SM 3		1440	4000	3940	0.37	0.4	1	0.7	230	155	355	195	14	28.7
SM 4		1440	8000	4850	0.75	0.59	1.5	1.2	250	180	390	215	14	43.5

Wedge Mounting (Enclosure : IP-55)

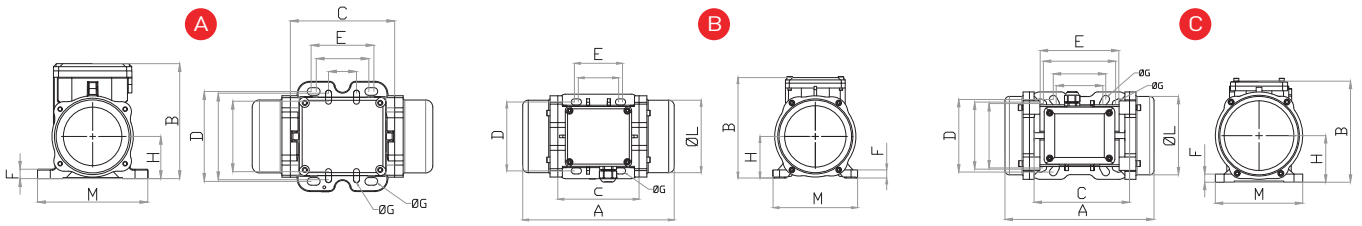
Technical chart of vibrating motor

Model	Ref	RPM	Centrif. Force		Power		Current		A	B	C	Weight
	Fig		N	kW	A max.	kgs.(50 Hz)						
SW 1	C	1440	16000	6060	1	0.8	2	1.8	238	178	452	59.3
SW 2		1440	25000	10100	1.5	1.07	3	2.4	284	228	536	107.4
SW 3		1440	40000	10160	2.1	1.5	5	2.8	284	228	546	135
SW 5		1000	65000	20200	3.5	2.15	7.5	4	315	340	638	165.4
SW 7		1000	77000	5.5	10	315	340	638	168.3			





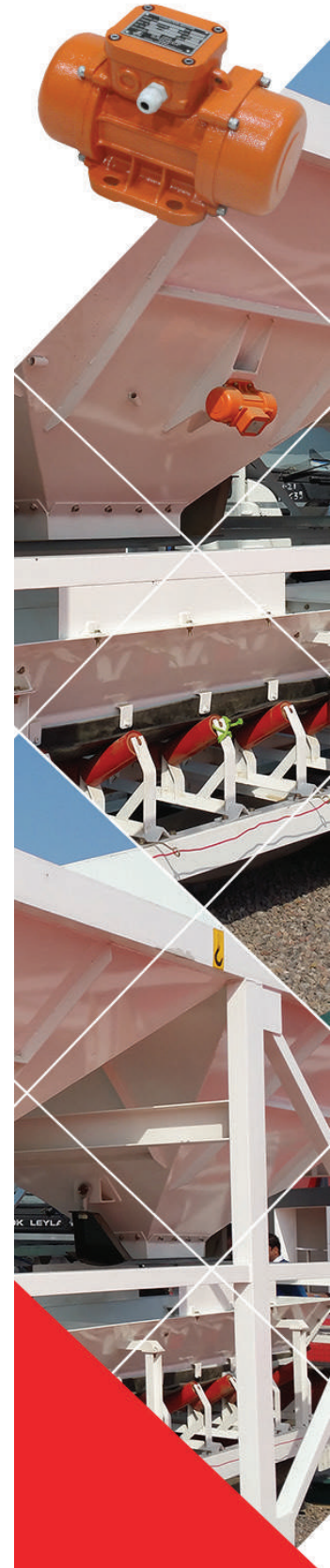
2 POLE MOTOR: FOOT MOUNTING



Model No.	Centrif.Force N		Working Moment kg-cm		Power kW		Current Amax		Suitable for Vibrating Max Weight of kgs
	50 Hz	60 Hz	50 Hz	60 Hz	50 Hz	60 Hz	50 Hz	60 Hz	
3000 rpm 230/415 V 50 Hz & 3600 rpm 260/460 V 60 Hz									
Enclosure : IP 66									
SA 60	660	670	1.35	0.82	0.08	0.09	0.16	0.18	50
SA 100	980	1080	2.01	1.52	0.1	0.11	0.19	0.18	55
SA 200	1870	1890	3.72	2.61	0.18	0.21	0.35	0.35	75
SA 300	3200	3230	6.19	4.46	0.27	0.28	0.52	0.45	175
SA 400	4000	4110	7.96	5.68	0.3	0.36	0.58	0.6	225
SA 500	5200	5340	10.27	7.38	0.5	0.58	0.96	0.97	300
SA 700	7500	7650	14.9	10.57	0.66	0.75	1.25	1.24	375
SA 800	7700	8000	15.68	11.06	0.75	0.9	1.45	1.5	500
SA 1200	9800	10130	20.26	14	0.95	1.15	1.85	1.95	750
SA 1300	13300	13650	27.58	18.86	1.3	1.38	2.44	2.25	850
SA 1600	15600	16080	31.26	22.2	1.57	1.6	2.94	2.61	960
SA 2000	19800	19970	36.78	27.6	2	2.1	3.75	3.42	1200
SA 2300	22500	23060	45.97	31.87	2.4	2.45	4.44	3.94	1350
SA 3200	32520	33750	68.1	43.89	2.9	2.92	5.3	4.6	1900
SA 4000	40000	40500	79.4	55.99	2.9	2.92	5.3	4.6	2150
SA 5000	50000	50500	103.24	69.76	4	4.1	7.2	6.28	2300
SA 6500	65000	65550	129.55	90.54	5.5	5.52	9.5	8	2750
SA 9000	90250	93750	179.59	129.55	10	10.3	14	18	3000
Enclosure : IP 55									
SA 1	900	910	1.85	1.68	0.13	0.14	0.4	0.5	75
SA 3	3000	3030	6	5.4	0.23	0.25	0.5	0.6	225
SA 4	3900	3940	8.1	7.4	0.37	0.4	0.6	0.7	270
SA 5	4800	4850	10.56	9.6	0.55	0.59	1	1.2	300
SA 6	6000	6060	12.5	11.4	0.75	0.8	1.5	1.8	360
SA 10	10000	10100	21	19.1	1	1.07	2	2.4	615
SA 16	16000	10160	32.5	29.6	1.4	1.5	2.5	2.8	960
SA 20	20000	20200	42.3	38.6	2	2.15	3.75	4	1200
SA 30	30000	30300	61	55.6	2.9	3.1	5.5	6	1750
SA 50	50000	50500	100	91.2	6.1	6.5	7.5	8.5	2500

Aluminium Frame

SG Iron Frame





2 POLE MOTOR: FOOT MOUNTING

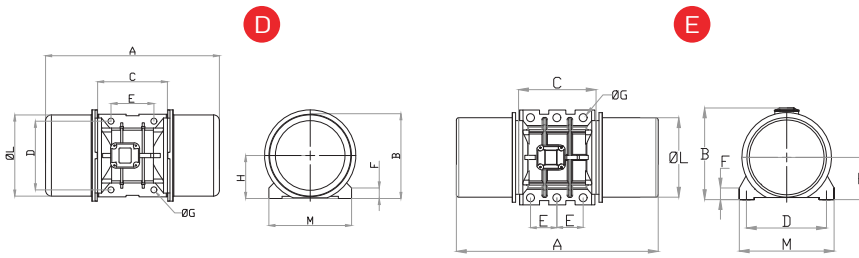


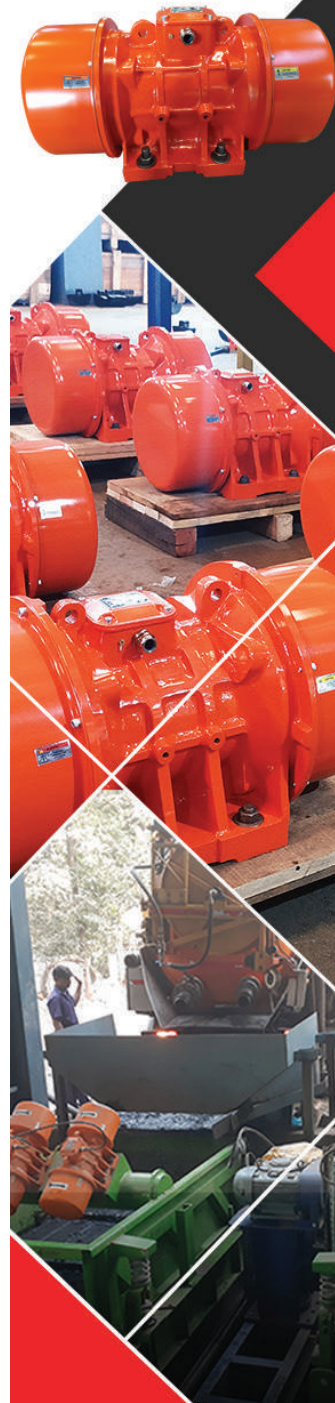
Fig A

Fig C

E	D	ØG
mm		
* 62-74	106	9
33	83-102	7

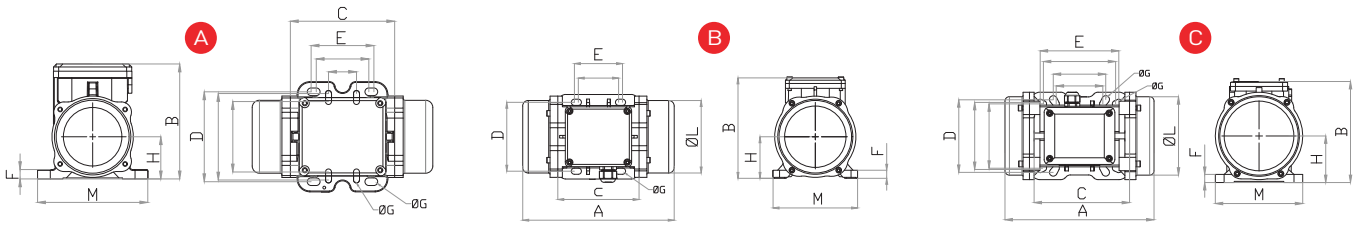
E	D	ØG
mm		
80	110	11
** 90	125	13
124	110	11
135	115	11

Model No.	Fig	E	D	F	C	M	L	H	A	B	G	No. Of Holes	Weight kgs		
		mm	mm	mm	mm	mm	mm	mm	mm	mm	mm		50 Hz	60 Hz	
3000 rpm 230/415 V 50 Hz & 3600 rpm 260/460 V 60 Hz														Enclosure : IP 66	
SA 60	A	*	*	12	121	130	86	48	220	136	*	4	4.8	4.8	
SA 100	A	*	*	12	121	130	86	48	220	136	*	4	5	5	
SA 200	B	62-74	106	14	123	130	112	64	230	158	9	4	7.2	7.2	
SA 300	C	**	**	14	165	155	132	80	280	185	**	4	10.3	10.3	
SA 400	C	**	**	14	165	155	132	80	280	185	**	4	12	12	
SA 500	D	105	140	22	178	168	158	92	340	196	13	4	19.2	19.2	
SA 700	D	105	140	22	178	168	158	92	340	196	13	4	20	20	
SA 800	D	120	170	22	205	209	170	94	395	210	17	4	22.7	22.7	
SA 1200	D	120	170	22	205	209	170	94	395	210	17	4	23.7	23.7	
SA 1300	D	120	170	22	205	209	170	94	395	210	17	4	24.2	24.2	
SA 1600	D	140	190	30	220	228	221	120	455	247	17	4	57.5	51.2	
SA 2000	D	140	190	30	220	228	221	120	455	247	17	4	59	52	
SA 2300	D	140	190	30	220	228	221	120	455	247	17	4	60	51.6	
SA 3200	D	155	255	35	273	302	264	147	605	318	25	4	103	101	
SA 4000	D	155	255	35	273	302	264	147	605	318	25	4	107	104	
SA 5000	D	155	255	35	273	302	264	147	605	318	25	4	111	106	
SA 6500	D	200	320	50	325	385	378	200	625	410	28	4	228	225	
SA 9000	D	200	320	50	325	385	378	200	625	410	28	4	240	234	
Enclosure : IP 55															
SA 1	D	67	100	30	98	130	120	62	232	147	9	4	7	7	
SA 3	D	115	135	25	142	162	145	80	320	200	9	4	17	17	
SA 4	D	115	135	25	142	162	145	80	320	200	11	4	20	20	
SA 5	D	120	180	40	165	210	172	95	350	230	14	4	29	29	
SA 6	D	120	180	40	165	210	172	95	374	230	14	4	30	30	
SA 10	D	125	230	58	175	260	218	115	444	266	18	4	50	50	
SA 16	D	125	230	58	175	260	218	115	494	266	18	4	60	60	
SA 20	D	165	260	60	230	330	258	135	550	300	27	4	85	85	
SA 30	E	140	290	60	345	355	310	160	725	338	27	6	140	140	
SA 50	E	175	400	70	420	470	350	185	820	400	33	6	280	280	





4 POLE MOTOR: FOOT MOUNTING



Aluminium Frame

SG Iron Frame

Model No.	Centrif.Force N		Working Moment kg-cm		Power kW		Current A max		Suitable for Vibrating MaxWeight of kgs
	50 Hz	60 Hz	50 Hz	60 Hz	50 Hz	60 Hz	50 Hz	60 Hz	
1440 rpm 230/415 V 50 Hz & 1800 rpm 260/460 V 60 Hz									
Enclosure : IP 66									
SB 40	270	360	2.15	1.99	0.04	0.05	0.26	0.25	50
SB 90	750	760	5.97	4.2	0.09	0.1	0.31	0.31	90
SB 200	1940	1960	15.44	10.83	0.16	0.17	0.49	0.5	130
SB 400	4200	4230	33.43	23.38	0.3	0.35	0.84	0.86	175
SB 500	5040	5080	40.12	28.08	0.35	0.4	1.16	1.09	225
SB 700	7140	7120	56.83	39.36	0.62	0.73	1.32	1.41	325
SB 1100	11140	11220	88.67	62.02	0.65	0.78	1.5	1.7	425
SB 1200	12700	12920	99.2	69.4	0.75	0.9	1.6	1.75	480
SB 1410	13640	13880	108.57	78.72	0.9	1.1	1.7	1.78	600
SB 1710	17250	17640	137.31	91.98	1.15	1.3	2.1	2.09	750
SB 2310	22500	23000	187.69	137.36	1.5	1.8	2.1	2.09	950
SB 1400	13640	13880	108.57	78.72	0.9	1.1	1.71	1.78	650
SB 1700	17250	16640	137.31	91.98	1.15	1.3	2.16	2.09	800
SB 2400	23580	24850	187.69	137.36	1.6	1.9	3	3.2	1000
SB 2500	25570	25570	203.53	135.65	1.8	2	3.4	3.4	1250
SB 3000	31240	30700	248.66	169.75	1.9	2.3	3.7	3.8	1500
SB 3800	38530	37040	306.69	204.74	2.2	2.6	4.12	4.15	1800
SB 4300	43120	43590	343.22	240.95	2.5	3	5.7	5.8	2000
SB 5500	54950	54950	437.39	303.74	3.6	3.45	6.5	6.6	2750
SB 7200	72460	71880	576.76	397.32	5	6	9.6	9.5	3250
SB 9000	90200	90230	717.97	498.76	7.5	8.5	12	12	3500
SB 10000	100520	106430	800.1	588.3	7.8	9.4	13	13	4200
Enclosure : IP 55									
SB 1	1000	1010	15.4	14	0.16	0.17	0.5	0.6	70
SB 2	2000	2020	22.5	20.5	0.19	0.2	0.6	0.7	90
SB 3	3000	3030	29.3	26.7	0.23	0.24	0.7	0.8	130
SB 4	4000	4040	34.5	31.4	0.37	0.4	1	1.1	170
SB 6	6000	6060	51.5	47	0.51	0.55	1.2	1.3	275
SB 8	8000	8080	63.35	57.8	0.75	0.8	1.4	1.5	350
SB 10	10000	10100	77.5	70.7	0.83	0.89	1.6	1.8	415
SB 16	16000	10160	130	118.6	1.1	1.2	2	2.3	730
SB 25	25000	25250	209	190.7	1.5	1.6	2.5	2.8	1190
SB 37	37000	37370	300	273.8	2.45	2.6	5	5.7	1700
SB 46	46000	46460	370	337.7	3	3.2	5.5	6.5	2200
SB 67	67000	67670	547	499	5.1	5.5	6	7.2	3175
SB 104	104000	105040	843	769	7.5	8	7.5	8.6	4500





4 POLE MOTOR: FOOT MOUNTING

Model No.	Fig	E	D	F	C	M	L	H	A	B	G	No. Of Holes	Weight kgs	
		mm	mm	mm	mm	mm	mm	mm	mm	mm	mm		50 Hz	60 Hz
1440 rpm 230/415 V 50 Hz & 1800 rpm 260/460 V 60 Hz													Enclosure : IP 66	
SB 40	A	*	*	12	121	130	86	48	223	136	*	4	5	5
SB 90	B	62-74	106	14	123	130	112	64	230	158	9	4	7.4	7.4
SB 200	C	**	**	14	165	155	132	80	280	177	**	4	12.3	12.3
SB 400	D	105	140	22	178	168	158	92	340	196	13	4	22	22
SB 500	D	105	140	22	178	168	158	92	340	196	13	4	23.5	23.5
SB 700	D	120	170	22	205	209	170	94	395	210	17	4	30	28.7
SB 1100	D	120	170	22	205	209	170	94	450	210	17	4	34.8	33.5
SB 1200	D	120	170	50	194	205	185	105	450	235	17	4	41.5	40
SB 1410	D	140	190	45	190	230	204	116	510	246	17	4	48.2	45.7
SB 1710	D	140	190	45	190	230	204	116	510	246	17	4	54.5	51
SB 2310	D	140	190	45	190	230	204	116	510	246	17	4	57	54
SB 1400	D	140	190	30	220	228	221	120	455	247	17	4	67.7	66
SB 1700	D	140	190	30	220	228	221	120	455	247	17	4	70	66.5
SB 2400	D	140	190	30	220	228	221	120	505	247	17	4	76	71.4
SB 2500	D	155	225	40	250	272	235	140	535	284	22	4	107.5	103
SB 3000	D	155	225	40	250	272	235	140	535	284	22	4	115.4	109
SB 3800	D	155	255	35	273	302	264	147	610	318	24	4	144	137.5
SB 4300	D	155	255	35	273	302	264	147	720	318	24	4	158	150
SB 5500	D	180	280	37	304	332	310	167	645	360	26	4	208	200
SB 7200	D	200	320	49	325	385	378	200	625	410	28	4	298	289.5
SB 9000	D	200	320	49	325	385	378	200	625	410	28	4	303	293
SB 10000	E	125	380	44	367	452	378	204	760	430	38	6	331	317
													Enclosure : IP 55	
SB 1	D	67	100	30	98	130	120	62	232	147	9	4	7.1	7.1
SB 2	D	115	135	25	142	162	145	80	320	200	11	4	18	18
SB 3	D	120	180	40	165	210	172	95	378	230	14	4	28	28
SB 4	D	120	180	40	165	210	172	95	378	230	14	4	30	30
SB 6	D	120	180	40	165	210	172	95	428	230	14	4	35	35
SB 8	D	120	180	40	165	210	172	95	453	245	14	4	45	45
SB 10	D	125	230	58	175	260	218	115	444	266	18	4	55	55
SB 16	D	125	230	58	175	260	218	115	494	266	18	4	70	70
SB 25	D	165	260	60	230	330	258	135	550	300	27	4	100	100
SB 37	E	140	290	60	345	355	310	160	725	338	27	6	155	155
SB 46	E	140	290	60	345	355	310	160	725	338	27	6	170	170
SB 67	E	175	400	70	420	470	350	185	820	400	33	6	285	285
SB 104	E	175	400	70	420	470	350	185	820	400	33	6	325	325

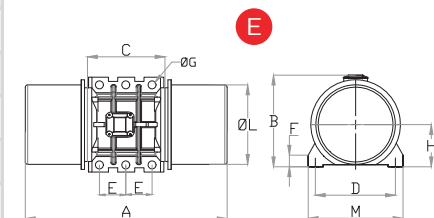
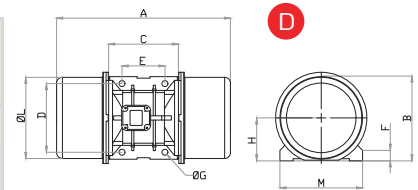


Fig A

*	E	D	ØG
	mm		
	62-74	106	9
	33	83-102	7

Fig C

**	E	D	ØG
	mm		
	80	110	11
	90	125	13
	124	110	11
	135	115	11





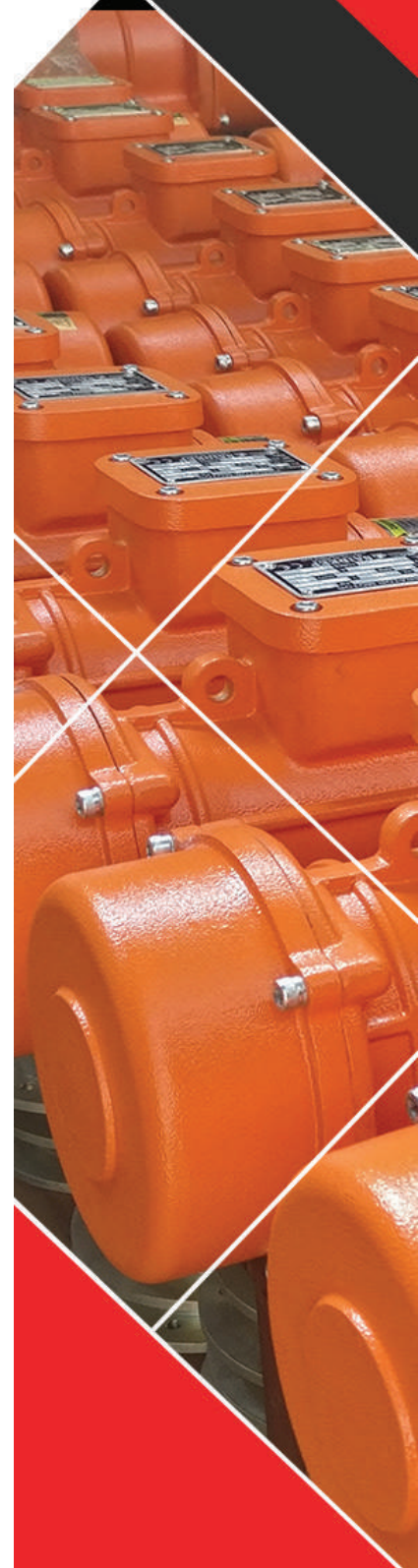
6 POLE MOTOR: FOOT MOUNTING



Model No.	Centrif.Force N		Working Moment kg-cm		Power kW		Current Amax		Suitable for Vibrating Max Weight of
	50 Hz	60 Hz	50 Hz	60 Hz	50 Hz	60 Hz	50 Hz	60 Hz	kgs
900 rpm 230/415 V 50 Hz & 1200 rpm 260/460 V 60 Hz									
Enclosure : IP 66									
SC 50	530	530	9.49	6.59	0.12	0.14	0.4	0.4	50
SC 100	1050	1060	18.81	13.18	0.12	0.14	0.4	0.4	60
SC 200	1870	1880	33.49	23.38	0.18	0.21	0.75	0.75	75
SC 300	2670	2690	47.82	33.46	0.35	0.38	0.67	0.64	100
SC 500	4750	4790	85.07	59.57	0.35	0.4	1.2	1.44	250
SC 600	6730	6785	132.4	92.68	0.35	0.38	0.75	0.8	275
SC 710	7350	8050	139.1	97.38	0.68	0.76	1.75	1.9	310
SC 810	7940	8880	141.1	112.6	0.68	0.76	1.4	1.52	350
SC 1110	10480	11040	187.69	137.31	0.75	0.8	1.42	1.55	375
SC 800	7670	8730	137.37	108.58	0.68	0.76	1.29	1.55	350
SC 1100	10480	11040	187.69	137.31	0.75	0.8	1.42	1.55	400
SC 1500	15900	15800	284.76	196.51	1.1	1.3	2.1	2.3	600
SC 1600	16730	16360	299.6	203.47	1.1	1.3	2.83	3.1	650
SC 2100	20830	20000	373.05	248.74	1.5	1.8	3	3.2	825
SC 2600	26100	24650	467.44	306.7	1.96	2.1	3.63	3.9	1000
SC 3000	30170	30500	540.33	379.71	2.2	2.4	4.5	4.8	1250
SC 3800	38000	35175	680.38	437.41	2.5	3	4.67	4.9	1600
SC 4700	46800	46970	838.34	584.17	3.2	3.9	6.5	6.85	2000
SC 5200	51900	52630	929.86	654.57	3.8	4	6.92	7.1	2300
SC 6500	65000	66250	1165.19	823.96	4.3	5	7.76	7.81	2700
SC 7200	71520	71920	1315.2	920.5	5.5	6.5	11.2	11.6	2850
SC 7300	73575	74350	1264.1	884.6	4	4.75	10	10.7	3000
SC 8000	80200	81320	1435.98	929.8	7.1	7.5	12.6	11.6	3100
SC 9000	89350	93690	1600.39	1165.23	7.5	8.3	13.2	12.6	4000
SC 10000	99850	99700	1788.44	1239.98	7.6	8	13.5	12.7	4750
SC 13000	130000	132500	2329.84	1647.42	10	10	17	16	5500
Enclosure : IP 55									
SC 2	2000	2020	33.5	30.5	0.19	0.2	0.5	0.6	75
SC 3	3000	3030	48.35	44.1	0.4	0.43	1.2	1.3	100
SC 4	4000	4040	77.5	70.7	0.65	0.7	1.3	1.4	150
SC 6	6000	6060	132.4	120.8	0.75	0.8	1.4	1.55	275
SC 10	10000	10100	185	169	1	1.07	2	2.3	375
SC 11	11000	11110	209	190	1	1.07	2.5	2.8	400
SC 17	17000	17170	314	286	1.24	1.3	2.8	3.2	565
SC 23	23000	23230	418	381	1.67	1.8	3	3.7	930
SC 35	35000	35350	631	576	2.3	2.4	4	4.8	1440
SC 70	70000	70700	1278	1166	3.85	4.1	6	7	2950
SC 90	90000	90900	1640	1497	5.5	5.9	7.5	8.7	4000
SC 122	122000	123220	2250	2053	8.5	9.1	8	9.6	5500

Aluminium Frame

SG Iron Frame

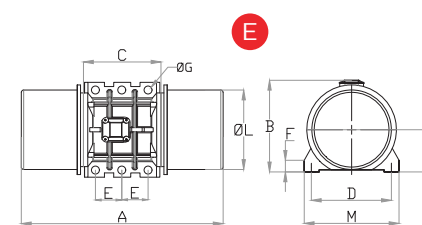
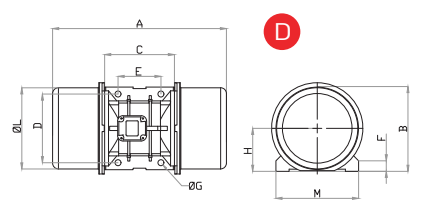
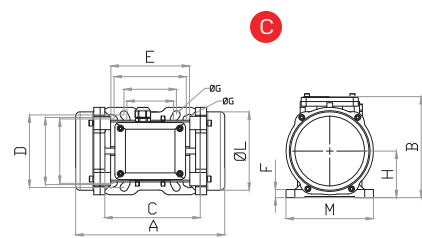




6 POLE MOTOR: FOOT MOUNTING

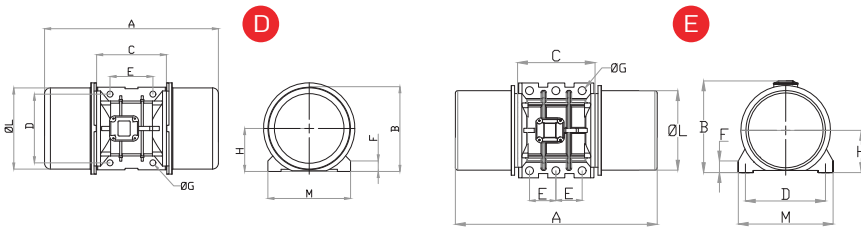


Model No.	Fig	E	D	F	C	M	L	H	A	B	G	No. Of Holes	Weight kgs	
		mm	mm	mm	mm	mm	mm	mm	mm	mm	mm		50 Hz	60 Hz
1440 rpm 230/415 V 50 Hz & 1800 rpm 260/460 V 60 Hz													Enclosure : IP 66	
SC 50	C	**	**	14	165	155	132	80	280	175	**	4	10.8	10.8
SC 100	C	**	**	14	165	155	132	80	305	175	**	4	12.6	12.6
SC 200	D	105	140	22	178	168	158	92	340	196	13	4	22	22
SC 300	D	120	170	22	205	209	170	94	450	210	17	4	30	28
SC 500	D	120	170	22	205	209	170	94	450	210	17	4	34.8	32
SC 600	D	120	170	50	194	205	185	105	450	235	17	4	41.5	39
SC 710	D	120	170	46	187	210	231	155	345	285	18	4	47	44
SC 810	D	140	190	45	190	230	204	116	510	246	17	4	54.5	51
SC 1110	D	140	190	45	190	230	221	116	510	246	17	4	65	60.5
SC 800	D	140	190	30	220	228	221	120	455	247	17	4	70	66.5
SC 1100	D	140	190	30	220	228	221	120	505	247	17	4	76	71.4
SC 1500	D	140	190	30	220	228	221	120	580	247	17	4	88.5	81.7
SC 1600	D	155	225	40	250	272	235	140	570	284	22	4	115.4	108.9
SC 2100	D	155	225	40	250	272	235	140	625	284	22	4	125.6	117.6
SC 2600	D	155	255	35	273	302	264	147	720	318	24	4	160	150
SC 3000	D	155	255	35	273	302	264	147	720	318	24	4	174	162.2
SC 3800	D	180	280	37	304	332	310	167	725	360	26	4	229	217
SC 4700	D	180	280	37	304	332	310	167	770	360	26	4	248	233.3
SC 5200	D	200	320	49	325	385	378	200	705	410	28	4	314	301.2
SC 6500	D	200	320	49	325	385	378	200	705	410	28	4	331	315.4
SC 7200	D	200	320	49	325	385	378	200	810	410	28	4	340	323.6
SC 7300	E	124	303	53	298	357	378	203	824	416	26	6	345	325.4
SC 8000	D	200	320	49	325	385	378	200	810	410	28	4	358	338.4
SC 9000	D	200	320	49	325	385	378	200	810	410	28	4	362	340.4
SC 10000	E	125	380	44	367	452	378	204	855	430	38	6	412	385
SC 13000	E	125	380	44	367	452	378	204	955	430	38	6	465	432
Enclosure : IP 55														
SC 2	D	115	135	25	142	162	145	80	320	200	11	4	20	20
SC 3	D	120	180	40	165	210	172	95	378	230	14	4	30	30
SC 4	D	120	180	40	165	210	172	95	428	230	14	4	35	35
SC 6	D	120	180	40	165	210	172	95	453	245	14	4	45	45
SC 10	D	125	230	58	175	260	218	115	494	266	18	4	73	73
SC 11	D	165	260	60	230	330	258	135	575	300	27	4	95	95
SC 17	D	165	260	60	230	330	258	135	600	300	27	4	110	110
SC 23	D	165	260	60	230	330	258	135	672	300	27	4	132	132
SC 35	E	140	290	60	345	355	310	160	730	338	27	6	180	180
SC 70	E	140	290	95	395	355	350	195	870	372	27	6	225	225
SC 90	E	175	400	70	420	470	350	185	900	400	33	6	360	360
SC 122	E	175	400	70	420	470	415	210	905	425	33	6	425	425





8 POLE MOTOR: FOOT MOUNTING



Aluminium Frame

SG Iron Frame

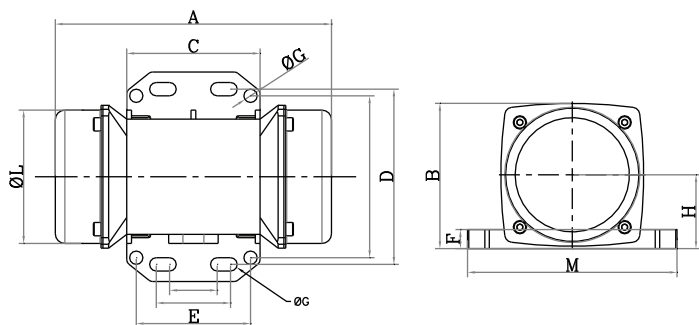
Model No.	Centrif.Force N		Working Moment kg-cm		Power kW		Current A max		Suitable for Vibrating Max Load in kg
	50 Hz	60 Hz	50 Hz	60 Hz	50 Hz	60 Hz	50 Hz	60 Hz	
750 rpm 230/415 Volts 50 Hz & 900 rpm 260/460 Volts 60 Hz									Enclosure : IP 66
SD 150	1030	1500	33.49	0.23	0.25	1.15	1.15	125	
SD 250	1755	2525	56.93	0.35	0.38	1.15	1.15	190	
SD 400	2590	3725	84.02	0.35	0.38	1.15	1.15	275	
SD 910	6250	9000	202.4	0.4	0.5	1.9	2	525	
SD 650	4225	6100	137.37	0.5	0.6	1.2	1.2	375	
SD 900	5775	8325	187.69	0.65	0.7	1.25	1.3	550	
SD 1300	9225	13300	299.6	1.2	1.2	2.5	1.8	700	
SD 2100	14500	20750	467.44	1.5	1.8	2.8	2.9	825	
SD 3100	21000	30150	680.38	2	2.3	3.8	4	1450	
SD 3800	25800	37200	838.34	2.5	3	6	6	1700	
SD 4200	28600	41200	929.86	2.9	3.4	6.5	6.5	2000	
SD 5300	35900	51650	1165.19	4	4.3	8.5	8	2250	
SD 6500	44200	63650	1435.98	5	5.9	10	10	2750	
SD 10000	68000	97550	2200.43	6.8	7.5	13.5	12.5	4750	

Model No.		E	D	F	C	M	L	H	A	B	G	No.Of Holes	Weight kgs
		mm	mm	mm	mm	mm	mm	mm	mm	mm	mm		50 Hz
750 rpm 230/415 V 50 Hz & 900 rpm 260/460 V 60 Hz													Enclosure : IP 66
SD 150	D	105	140	22	178	168	158	92	338	196	13	4	21.4
SD 250	D	120	170	22	205	209	170	94	397	210	17	4	29
SD 400	D	120	170	22	205	209	170	94	451	210	17	4	35
SD 910	D	140	190	45	190	230	204	116	510	246	17	4	65
SD 650	D	140	190	30	220	228	221	120	448	265	17	4	65
SD 900	D	140	190	30	220	228	221	120	510	265	17	4	71
SD 1300	D	155	225	40	250	272	235	140	556	305	22	4	100
SD 2100	D	155	255	35	273	302	264	147	708	315	24	4	149
SD 3100	D	180	280	37	304	332	310	167	683	360	26	4	215
SD 3800	D	180	280	37	304	332	310	167	733	360	26	4	231
SD 4200	D	200	320	49	325	385	378	200	685	395	28	4	280
SD 5300	D	200	320	49	325	385	378	200	685	395	28	4	305
SD 6500	D	200	320	49	325	385	378	200	785	395	28	4	325
SD 10000	E	125	380	44	367	452	378	204	826	445	38	6	420





MICRO MOTOR



Micro Motor (Three Phase) 2 Pole 3000 rpm 400/415 Volts 50 Hz & 3600 rpm 460 Volts 60 Hz IP-66

Model No.	Centrif.Force N		Working Moment kg-cm		Power kW		Current A max		Fig	E	D	F	C	M	L	H	A	B	G	No. Of Holes	Weight kgs	
	50 Hz	60 Hz	50 Hz	60 Hz	50 Hz	60 Hz	50 Hz	60 Hz													50 Hz	60 Hz
SA 21	200	290	0.4	0.4	0.04	0.04	0.12	0.1	B	25-40	92	10	74	110	71	39	156	78	6.5	4	2.1	
SA 41	450	650	0.9	0.9	0.06	0.06	0.18	0.2	B	25-40	92	10	74	110	71	39	170	78	6.5	4	2.2	

Micro Motor (Single Phase) 2 Pole 3000 rpm 230 Volts 50 Hz & 3600 rpm 260 Volts 60 Hz IP-66

SA21M	200	290	0.4	0.4	0.04	0.06	0.2	0.8	B	25-40	92	10	74	110	71	39	156	78	6.5	4	2.1
SA41M	450	650	0.6	0.9	0.06	0.07	0.25	0.8	B	25-40	92	10	74	110	71	39	170	78	6.5	4	2.2





OUR PRODUCTS



VIBRATORY EQUIPMENT

 Vibratory Motor	 High Frequency Pneumatic Shutter Vibrator	 Pneumatic Vibrators	 Vibratory Screens	 Tumbler Screen
 Bin Activators	 Inline Vibro Screen	 Vacuum Sifter	 Linear Vibrating Screen	 Vibratory Conveyor

ELECTRO-MAGNETIC EQUIPMENT

 Vibratory Bowl Feeder	 Diamond Sorting Machine	 Electromagnetic Suspended Magnet	 Electromagnetic Impact Vibrator	 Electromagnetic Vibrating Table
 Electromagnetic Vibro Feeder	 Electromagnetic Vibrating Feeder			

MAGNETIC EQUIPMENT

 Drawer type Magnetic Grill	 Liquid Line Trap Magnets	 Bullet Magnet	 Suspension Magnet	 Over Band Magnetic Separator
 Wet Drum Magnetic Separators	 Magnetic Roll Separator	 Drum Type Magnetic Separator	 Deep Reach Magnetic Separator	 Magnetic Pulley

*Technology That Lays
The Foundation Of Your Dreams...*



+ 91 9867024201 / 9867024202

sales@saideeponline.com

A-11, Laghu Udyog Kendra, I. B. Patel, Goregaon (E),
Mumbai. Maharashtra, India.

www.saideeponline.com

